

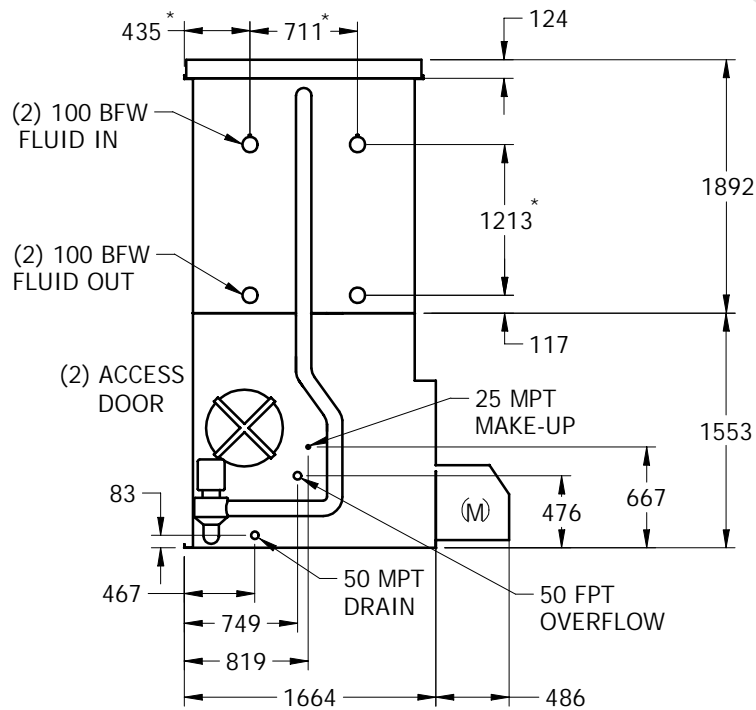
EVAPCO, INC.



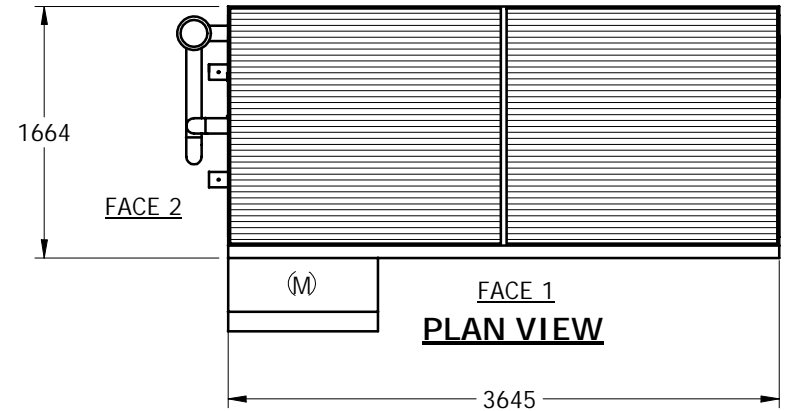
UNIT	CLOSED CIRCUIT COOLER	MODEL #	CAT 17-214	SCALE	NTS	DWG. #	WL051212-MRD-HF	REV.	-	DATE	5/5/2024	SERIAL #	
------	-----------------------	---------	------------	-------	-----	--------	-----------------	------	---	------	----------	----------	--

NOTES:

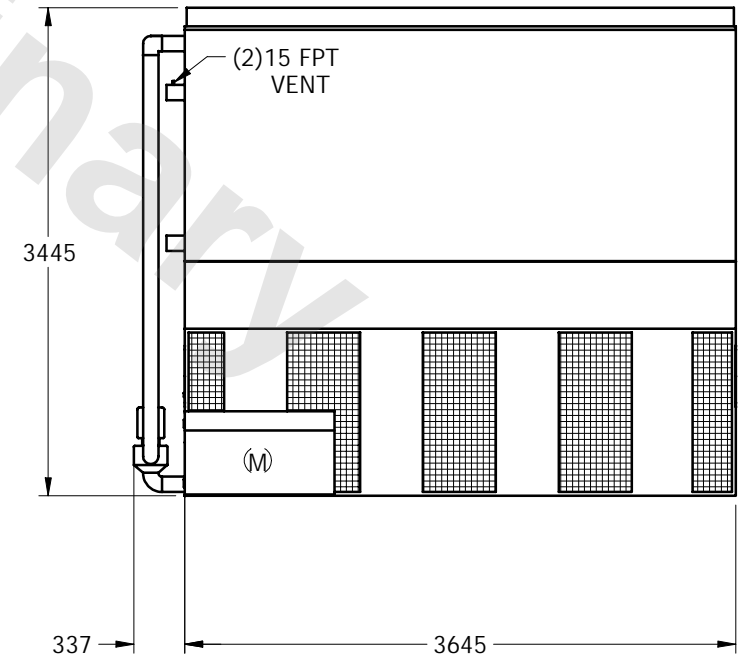
1. (M)- FAN MOTOR LOCATION
2. HEAVIEST SECTION IS COIL SECTION
3. MPT DENOTES MALE PIPE THREAD
FPT DENOTES FEMALE PIPE THREAD
BFW DENOTES BEVELED FOR WELDING
4. + UNIT WEIGHT DOES NOT INCLUDE ACCESSORIES (SEE SEPARATE DRAWINGS FOR ACCESSORIES)
5. 19mm DIA. MOUNTING HOLES. REFER TO RECOMMENDED STEEL SUPPORT DRAWING
6. MAKE-UP WATER PRESSURE-137 kPA MIN, 344 kPA MAX
7. * - APPROXIMATE DIMENSIONS DO NOT USE FOR PRE-FABRICATION OF CONNECTING PIPING.



FACE 2



PLAN VIEW



FACE 1

SHIPPING WEIGHT	4630	kg +	OPERATING WEIGHT	6535	kg	HEAVIEST SECTION WEIGHT	3495	kg	NO. OF SHIPPING SECTIONS	2
-----------------	------	------	------------------	------	----	-------------------------	------	----	--------------------------	---